

**WSS-1A** 120V  
**WSS-2A** 230V  
**WSS-9A** 100V

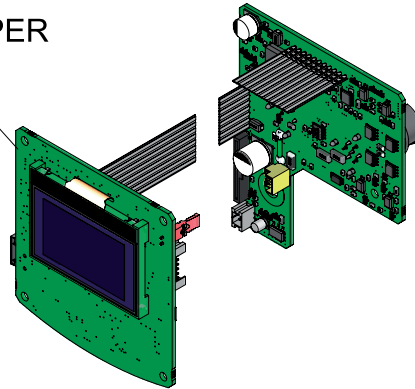
**PRECISION HIGH-TEMPERATURE WIRE STRIPPER**

SPARE PARTS	
<b>WSU-1A / WSU-2A / WSU-9A</b>	
-CIRCUIT	0027185
-ENCLOSURE	
· TOP	0011435
· BOTTOM	0014032
· FRONT	0013830
· BACK	0003506

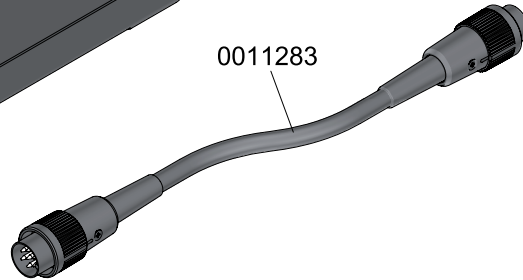
**WSS-1A** 120V FUSE T-1,25A  
**WSS-2A** 230V FUSE T-0,63A  
**WSS-9A** 100V FUSE T-1,6A

WSU-1A / WSU-2A / WSU-9A

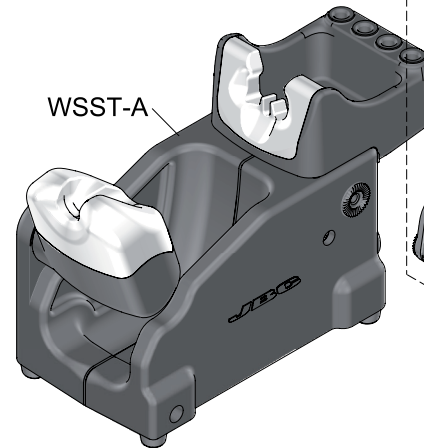
0027185



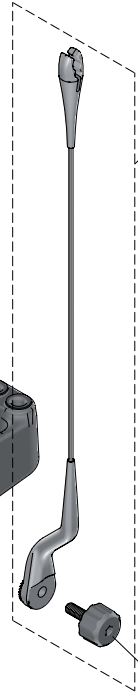
0011283



WSST-A

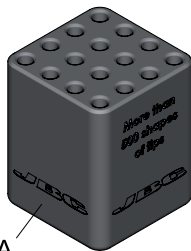


CC3702

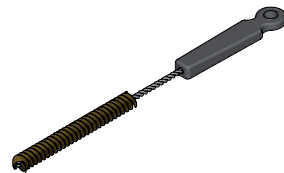


0010433

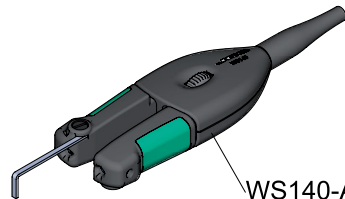
SCH-A



0022793



WS140-A



0023511

