

JBC

www.jbctools.com

Product
webpage



INSTRUCTION MANUAL



SF280

Auto Solder-Wire Handle

This manual corresponds to the following references:

SF280-A

Packing List

The following items are included:



Auto Solder-Wire Handle 1 unit



Manual 1 unit
Ref. 0028093

Connections

**SF Auto Solder Wire
Feeder Unit***

**Auto Solder-Wire
Handle**
Ref. SF280-A

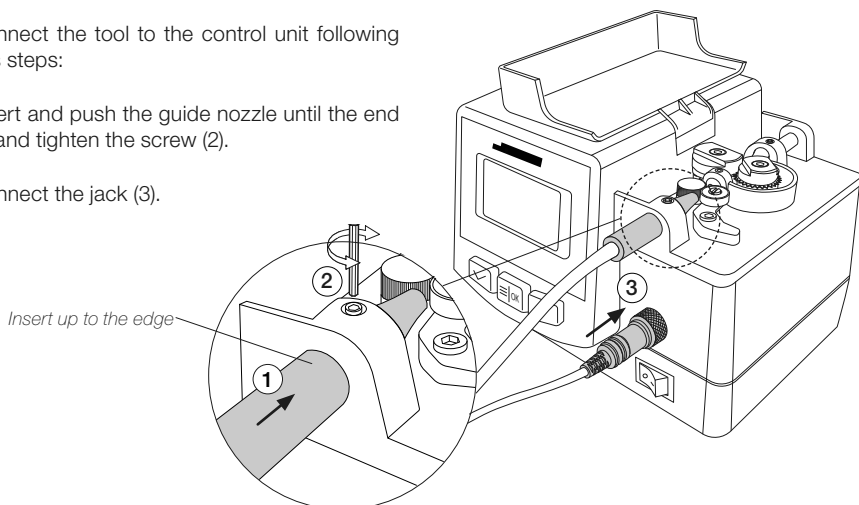


Tool Assembly

Connect the tool to the control unit following this steps:

Insert and push the guide nozzle until the end (1) and tighten the screw (2).

Connect the jack (3).



** Not included, sold separately*

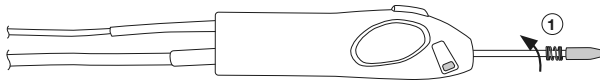
Outlet Nozzle Replacement

Flux can cause clogging at the outlet nozzle of the guide tube set and it can be necessary to replace the worn or clogged outlet nozzle.

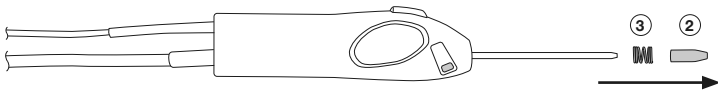
Note: There is a nozzle size for each soldering wire diameter. The use of the nozzle is necessary as its inner diameter is adjusted to the solder wire diameter and guides the wire with greater precision.

To replace the outlet nozzle, follow these steps:

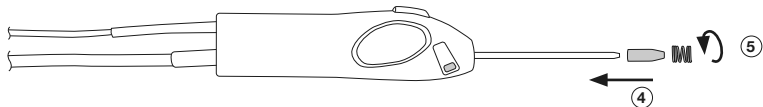
First, unload any remaining solder wire that might still be inside the guide tube and then unplug the tool. Unscrew the spring inwards (2), following the downward direction of the spring.



Once the outlet nozzle is released from the spring, pull the outlet nozzle out (2) and then remove the spring (3).

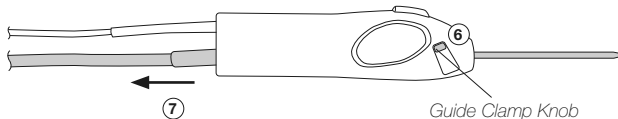


Place the new outlet nozzle onto the guide tube set (4) and then screw back the spring onto it to fix the outlet nozzle onto the guide tube (5).



Guide Tube Replacement

To replace the guide tube, follow the outlet replacement steps until reaching no. 3. Once both the outlet nozzle and the spring are removed, open the guide clamp knob (6) and remove the guide tube (7).



Insert the new guide tube into the tool, close the guide clamp knob to fix it in place and follow steps 4 and 5 to fix the outlet nozzle.

Enter "Tool Settings" at the SF control unit main menu and select the proper wire diameter to complete the process.

Main Menu

1

Reset settings

2

Station settings

3

Tool settings

4

Programs Settings

Accessories*

Guide Kits*

Various guide kits are available.

Choose the guide set according to solder wire diameter used.



Solder Wire Ø	Ref. with Solder Wire Perforation	Solder Wire Ø	Ref. without Solder Wire Perforation
-	-	0.4 mm / 0.016 in	GSF04D-B
-	-	0.5 mm / 0.020 in	GSF05D-B
-	-	0.6 mm / 0.025 in	GSF06D-B
0.8 mm / 0.032 in	GSF08V-B	0.7 - 0.8 mm / 0.028 - 0.032 in	GSF08D-B
1.0 mm / 0.040 in	GSF10V-B	0.9 - 1.0 mm / 0.035 - 0.040 in	GSF10D-B
1.2 mm / 0.047 in	GSF12V-B	1.1 - 1.2 mm / 0.043 - 0.047 in	GSF12D-B
1.5 mm / 0.059 in	GSF15V-B	1.3 - 1.5 mm / 0.051 - 0.059 in	GSF15D-B
1.6 mm / 0.063 in	GSF16V-B	1.6 mm / 0.063 in	GSF16D-B

Tool Stand*

Stand for SF280 Auto Solder-Wire Handle

Ref. SF-SE

It prevents SF280 Solder Feed Handle from rolling away while working.



** Not included, sold separately*

Notes

This image shows a single sheet of white paper with horizontal ruling lines. The lines are evenly spaced and run across the width of the page. There are no margins, text, or other markings on the paper.

Notes

This image shows a single sheet of white paper with horizontal blue or grey ruling lines. The lines are evenly spaced and run across the width of the page. There are no margins, text, or other markings on the paper.

Specifications

SF280

Auto Solder-Wire Handle

Ref.: SF280-A

- Suits for the following solder wire Ø:
 - Using Guide Sets with V-Cut: Ø 0.8 - 1.6 mm / Ø 0.03 - 0.06 in (see page 5)
 - Using Guide Sets without V-Cut: Ø 0.4 - 1.6 mm / Ø 0.02 - 0.06 in (see page 5)
- Total Net Weight: 60 gr / 0.01 lb
- Total Package Dimensions/Weight:
(L x W x H) 235 x 40 x 40 mm / 170 g
9.25 x 1.57 x 1.57 in / 0.37 lb

Complies with CE standards
ESD safe

JBC

Warranty

JBC's 2 year warranty covers this equipment against all manufacturing defects, including the replacement of defective parts and labor.

Warranty does not cover product wear or misuse.

In order for the warranty to be valid, equipment must be returned, postage paid, to the dealer where it was purchased.



This product should not be thrown in the garbage.

In accordance with the European directive 2012/19/EU, electronic equipment at the end of its life must be collected and returned to an authorized recycling facility.

